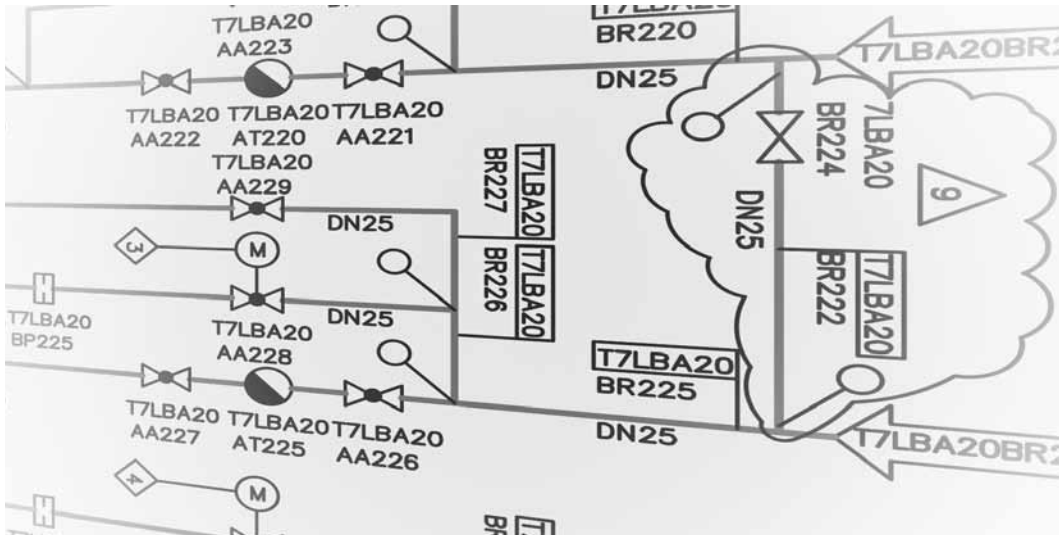


REFERENCES

08 | OPERATING MANUAL FOR NEURATH POWER PLANT



Type of project / service: Power Plant Documentation
Client: ALSTOM Power GmbH
Location: Neurath, North Rhine Westphalia, Germany
Project scope: 6 man-months

Project description:

For ALSTOM, to which REINSTEIN had already provided support in several power plants, REINSTEIN prepared a detailed description and documentation of the complex plant system as part of the operation manual for ALSTOM's coal-fired power plant at Neurath.

Project result:

In the course of the project, the client was particularly impressed by the great expertise of REINSTEIN's specialists. "With the know-how of its experts, REINSTEIN is a perfect match for our project requirements, always responding to our inquiries very quickly and flexibly. The specialists impress us with their high people skills and extensive project management expertise. Again, REINSTEIN proved to be an extraordinarily reliable partner - last but not least through the provision of personal assistance throughout the project by REINSTEIN's general management", as stated by Reiner Peters, Head of the German Plant Construction Division of ALSTOM Power.